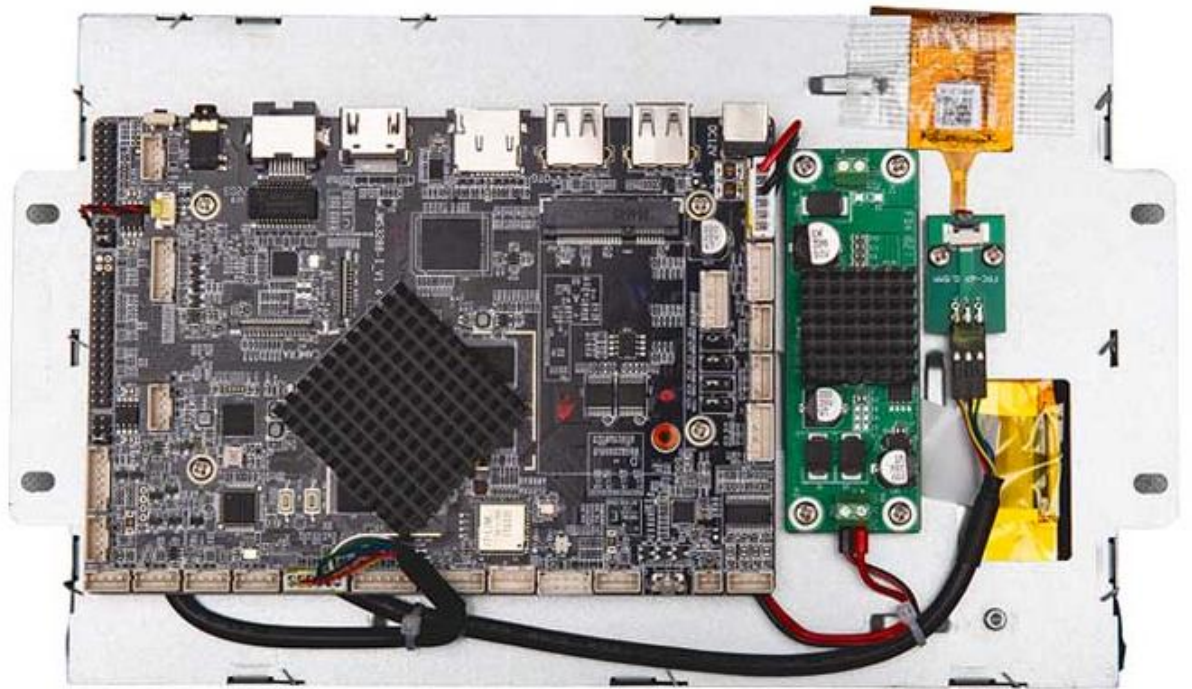


Android Screen Open Frame Panel PCs For Machinery / Kiosk / Control Cabinets

Size: 7" / 8" / 10.1" / 11.6"

SD-OMEGA open-frame Android panel PCs deliver high performance, and designs with a compact footprint. They are resistant to dust, water, humidity, shock, and vibration. Ideal for industrial environments, including industrial machines, control cabinets, digital signage, kiosks, etc.





7 inch, 8 inch, 10.1 inch, and 11.6 inch Open Frame Android Screens

SD-OMEGA new updated open frame panel PCs with Android operation systems and flat panels. Ideal for embedding into space-limited equipment that has an elegant shell, such as industrial machinery, kiosks, and digital signage. These panel PCs are equipped with abundant ports, and have high scalability, meeting a variety of Peripherals' connection requirements.

Product Features

- 7" / 8" / 10.1" / 11.6" options
- RK3288, Cortex-A17 quad-core processor, 1.8GHz
- Android 7.1, 2GB DDR3, 16GB eMMC (upgradable)
- Multi-touch capacitive touchscreen
- Self-developed industrial-grade ARM architecture motherboard
- 12 ~ 36V wide voltage operation
- Rich interface, a number of serial port/TTL interfaces optional
- Anti-electromagnetic interference meets EMI/EMC testing standards
- Provide SDK to support secondary development and debugging

Open Frame Panel PC - Product Model Quick Guide

| Model | LCD Display | Resolution | Aspect Ratio | Touch Screen Type |
|-----------|-------------|------------|--------------|-------------------|
| SD070-A16 | 7" | 1024*600 | 16:9 | Capacitive |
| SD080-A16 | 8" | 1024*768 | 4:3 | Capacitive |
| SD101-A16 | 10.1" | 1280*800 | 16:10 | Capacitive |
| SD116-A16 | 11.6" | 1366*768 | 16:9 | Capacitive |

| | | |
|-------------------------------|---------|--|
| Hardware Configuration | CPU | RK3288, Quad-Core 1.8GHz |
| | GPU | Mali-T764 |
| | RAM | DDR3 2GB (8GB optional) |
| | Storage | eMMC 16GB (8/32/64GB optional) |
| | OS | Android 7.1/10.0/12.0 / Linux4.4 / Ubuntu18.04 /20.04 / Debian10.0 |
| | WiFi | Dual-band 2.4/5G |

| | | |
|----------------------------|---------------------------|---|
| | Bluetooth | BT5.0 |
| | GPS | Optional |
| | MIC | Optional |
| | RTC | Support |
| | Timer Switch | Support |
| | | |
| Interface Parameter | USB | 1*USB OTG, 1*USB HOST, 4*USB sockets |
| | DC | 1*DC 2.1; Support wide voltage 12V~36V power supply |
| | SD/TF | Support |
| | RJ45 | 1*10M/100M/1000M adaptive Ethernet |
| | Earphone Jack | 3.5mm standard interface |
| | SIM Card | Standard SIM card slot |
| | COM | Default with 2*RS232,1*DEBUG port, 2*TTL for optional |
| | | |
| Screen Parameters | LCD Screen | 7" / 8" / 10.1" / 11.6" TFT LCD |
| | Color | 16.7M |
| | Pixel Pitch | 0.264mm |
| | Screen Panel | Industrial control screen |
| | Contrast | 800:1 |
| | Display Brightness | 300cd/m2 (high brightness can be customized) |
| | Viewing Angle | 85/85/85/85 (L/R/U/D) |
| | Backlight Type | LED backlight, screen life ≥ 50000h |
| | Touchscreen Type | Capacitive touchscreen |
| | Installation Method | POpen frame |
| | | |
| Product Reliability | Operating Temperature | -10°C ~ 60°C |
| | Storage Temperature | -20°C ~ 70°C |
| | Humidity | 10% to 95% (non-condensing) |
| | | |
| Power | Standby Power Consumption | 18W |
| | Input voltage | DC 12V ~36V |