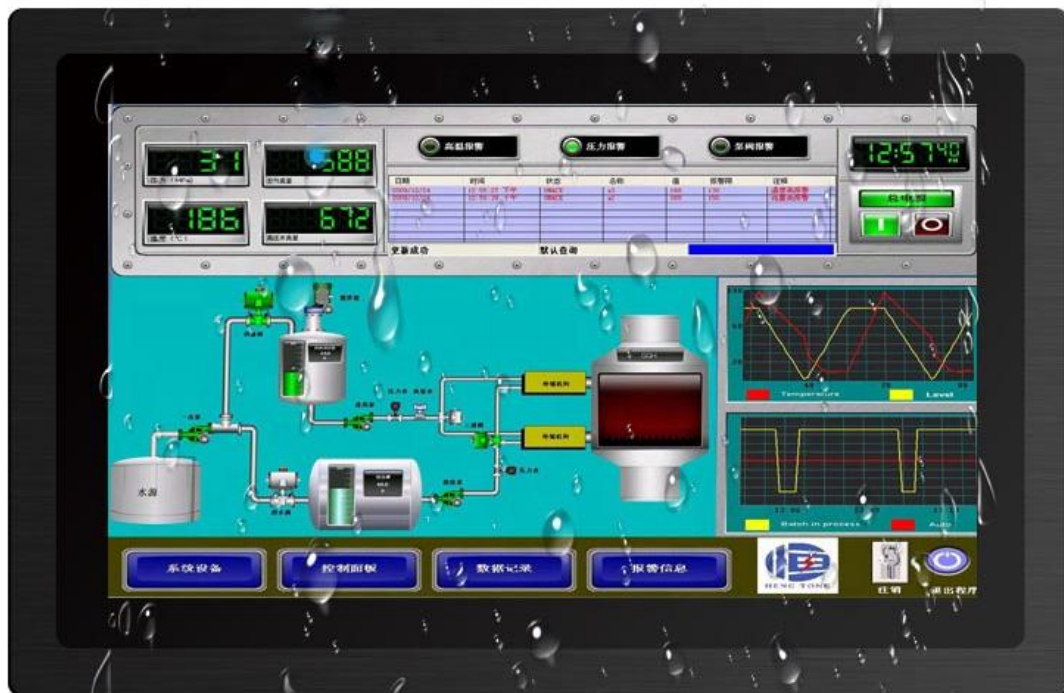


IP65 Sunlight Readable Marine Monitor Display Boat Monitor

Size: 8" ~ 21.5"

SD-OMEGA industrial-grade marine monitors, boat monitors are built to navigate and thrive through severe conditions.



RJ45(touch port) HDMI DVI VGA Audio I/O DC Earthing





Sunlight Readable Marine Monitor

Industrial Monitors installed in ships always need to operate for 7/24 long-time running, and the application condition is unfriendly, vibrant, heavy humidity, fog, water drops. In addition, it also has strict requests in terms of reliability and light adjustment. SD-OMEGA industrial monitor with touch screen installed in ship's control console, as boat touch screen monitor has advantages of high brightness screen, adjustable backlight, such function is indispensable for night operation of ship cab and control room. Dust-proof and waterproof for the front panel, full-seamed enclosure, anti-corrosion, anti-vibration, and shock-resistant are all indispensable reliable performance for a marine monitor.

Product Features

- 8 inch to 21.5 inch for option, multi-color LCD screen resolution available
- Standard PCAP touchscreen or resistive touchscreen
- 300 Nits (cd/m²) ~ 1,500 Nits (cd/m²) high brightness display
- Wide dimming range
- Support embedded installation and tabletop installation
- Backlight adjustment, multiple adjustment modes, provides comfortable operation during the night
- Multi-angle adjustment for table mounting
- Sealing and waterproof structure design
- CE, RoHS certified
- IP65 dust-proof and waterproof full-sealed front panel
- VGA, DVI, HDMI & composite video inputs
- 3-year warranty

Marine Monitors with Industrial-Grade Sunlight-readable, Waterproof Ruggedized Touch Screen Display

SD-OMEGA has launched the marine monitors with industrial-grade waterproof, sunlight-readable ruggedized touch screen displays, they are built specifically for use in sea vessels and water vehicles, oil & gas ships, or fishing boats, commercial cruise ships, and small personal vessels such as luxury yachts and boats.



Waterproof Panels

- IP65-rated dustproof and waterproof protection
- Supports higher IP-rating protection customization
- Supports operation with wearing gloves



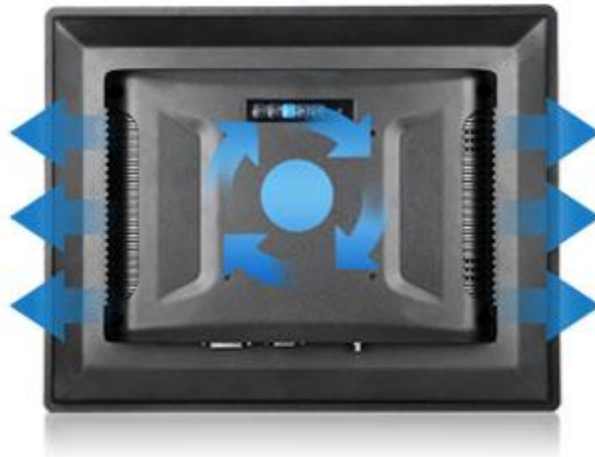
LED High Definition Industrial Control LCD Screen

- Long-span life LED backlight technology
- 1280 x 800 high-definition industrial control A+ grade screen, excellent quality
- 16:10 screen ratio; 16.7 dynamic color
- Default with 300nits brightness, support high brightness screen customization
- 6.5ms quick response; 170° full viewing angle
- Support OSD customization



Powerful, High Efficient and Mute Fanless Heat-Dissipation Structure

- This marine monitor adopts a rugged Aluminum alloy casing and industrial-grade circulating heat conduction system



Powerful Long-time Operation

- High & low temperature resistance: $-10^{\circ} \sim +60^{\circ}\text{C}$
- Supports wide voltage operation: 9 ~ 36Volt
- 7/24 Hours All-day Running



High-Performed Industrial-Grade Motherboard

- Rugged and reliable industrial-grade motherboard
- Stable performance, low power consumption, built-in anti-shedding interfaces
- Anti-electromagnetic interference, anti-static, anti-surge



Products Models Fast Guide

Model	Screen Size	Resolution	Aspect Ratio
SD080-M2	8"	1024*768	4:3
SD101-M2	10.1"	1280*800	16:10
SD104-M2	10.4"	1024*768	4:3
SD116-M2	11.6"	1920*1080	16:9
SD120-M2	12"	1024*768	4:3
SD150-M2	15"	1024*768	4:3
SD156-M2	15.6"	1920*1080	16:9
SD170-M2	17"	1280*1024	5:4
SD173-M2	17.3"	1920*1080	16:9
SD190-M2	19"	1280*1024	5:4
SD191-M2	19.1"	1440*900	16:10
SD215-M2	21.5"	1920*1080	16:9

Product Models	Model	Screen Size	Resolution	Aspect Ratio
	SD080-M2	8"	1024*768	4:3
	SD101-M2	10.1"	1280*800	16:10
	SD104-M2	10.4"	1024*768	4:3
	SD116-M2	11.6"	1920*1080	16:9
	SD120-M2	12"	1024*768	4:3
	SD150-M2	15"	1024*768	4:3
	SD156-M2	15.6"	1920*1080	16:9
	SD170-M2	17"	1280*1024	5:4
	SD173-M2	17.3"	1920*1080	16:9
	SD190-M2	19"	1280*1024	5:4
	SD191-M2	19.1"	1440*900	16:10
SD215-M2	21.5"	1920*1080	16:9	

Screen Parameters	Gray-scale response time	5ms
	Panel type	Industrial control A level screen with TFT
	Point distance	0.264mm
	Contrast	600:1 / 800:1 / 1000:1
	Backlight type	LED, span life≥50000h
	Display color	16.7M
	Visual angle	160/160°(178° full view angle is customizable)

	Brightness	300~1500cd/m2 (support high brightness)
	Touch-type	Resistive / Capacitive / Mouse control
Other Parameters	Power consumption	≤35W
	Power input	AC 100-240V, 50/60HZ
	Power Output	DC 12V / 4A
	Anti-static	contact 4KV-air 8KV (≥16KV can be customized)
	Anti-vibration	GB2423 standard
	Anti-interference	EMC EMI anti-electromagnetic interference
	Dustproof and waterproof	IP65 dust-proof and waterproof for the front panel
	Housing material	Black/Silver, Aluminum Alloy
	Installation method	Open frame (Embedded, desktop, wall-mounted, VESA optional)
	Relative humidity	95%, Non-Condensing
	Working temperature	-10°C~60°C (-30°~80°C customizable)
	Language menu	Chinese, English, German, French, Korean, Spanish, Italian, Russian
	I/O Interface	Signal Interface
Power connector		DC with ring attachment (optional DC terminal block)
Touch interface		USB I/O Interface
Other interfaces		Audio input and output