

7" LCD Touch monitor with VGA,HDMI

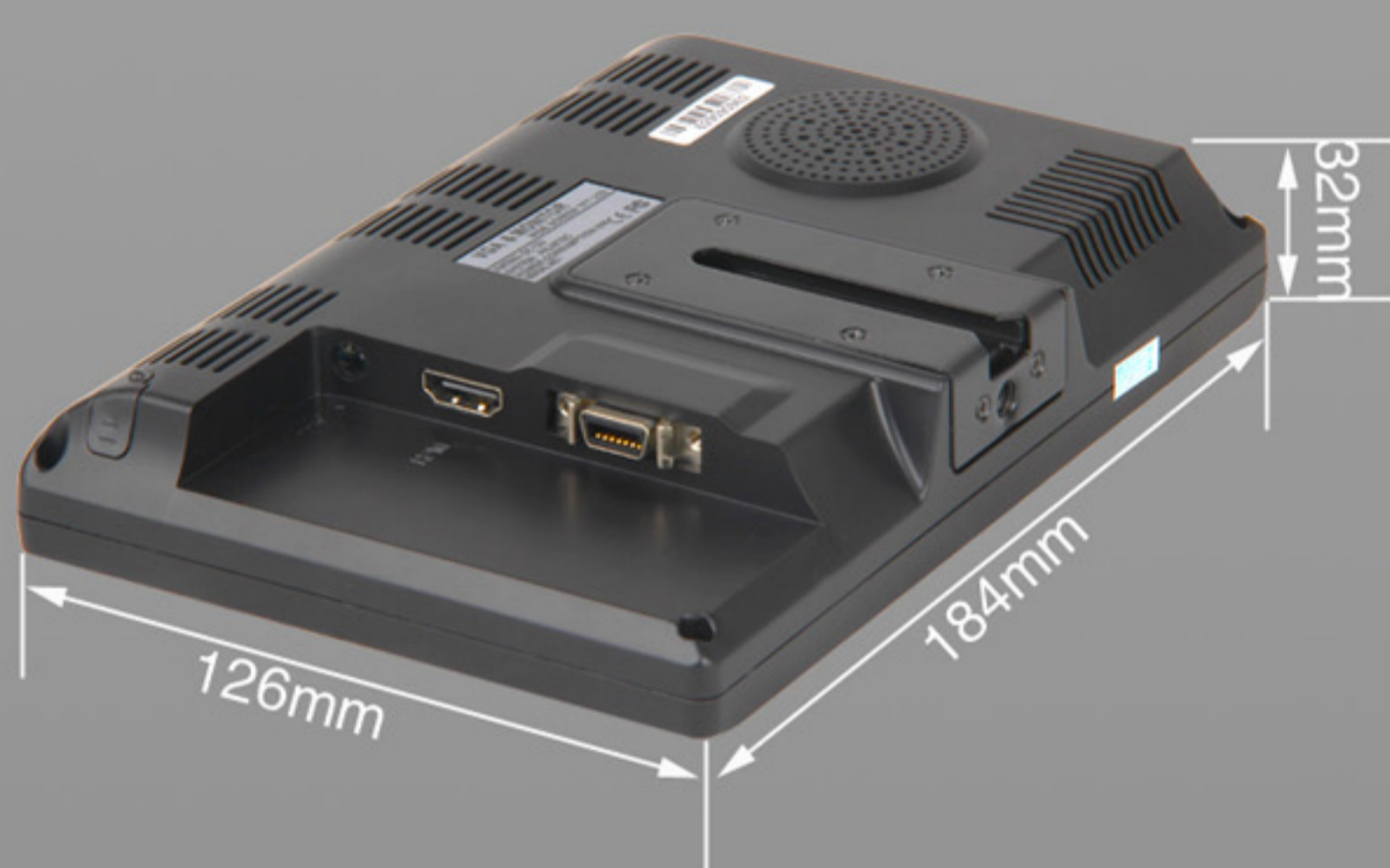


Touch Pen

Power

HDMI

SKS+AV+VGA



Specification

| | |
|--------------------|-------------------------------------|
| Desciption | 7" LCD Touch monitor with VGA, HDMI |
| Model: | SD629AHT |
| Brightness: | 300cd/m ² |
| Touch Screen: | 4&5 Wire Resistive Touch(optional) |
| Touch Interface: | USB&RS232 (optional) |
| Dot Resolution: | 800x480 pixels (max to1920×1440) |
| Contrast Ratio: | 500:1 |
| Aspect Ratio: | 16:9 |
| Backlight: | LED |
| Viewing Angle: | 70° /70° (L/R) 50° /70° U/D |
| Input Voltage: | DC12V±15% |
| Input Signal: | VGA, AV, HDMI (DVI optional) |
| Power Consumption: | ≅ 6W |
| Work Temperature: | -20℃~60℃ |
| Store Temperature: | -30℃~70℃ |
| Unit Size: | 184L × 126W × 32H (mm) |
| Unit Weight: | 495g |

Accessories



Home Power Adapter



Car Power Cord



14 PIN SKS Cord



VGA&USB Cable



Remote Controller & Touch Pen



Operation Manual



Touch Driver Disc



Installation Bracket